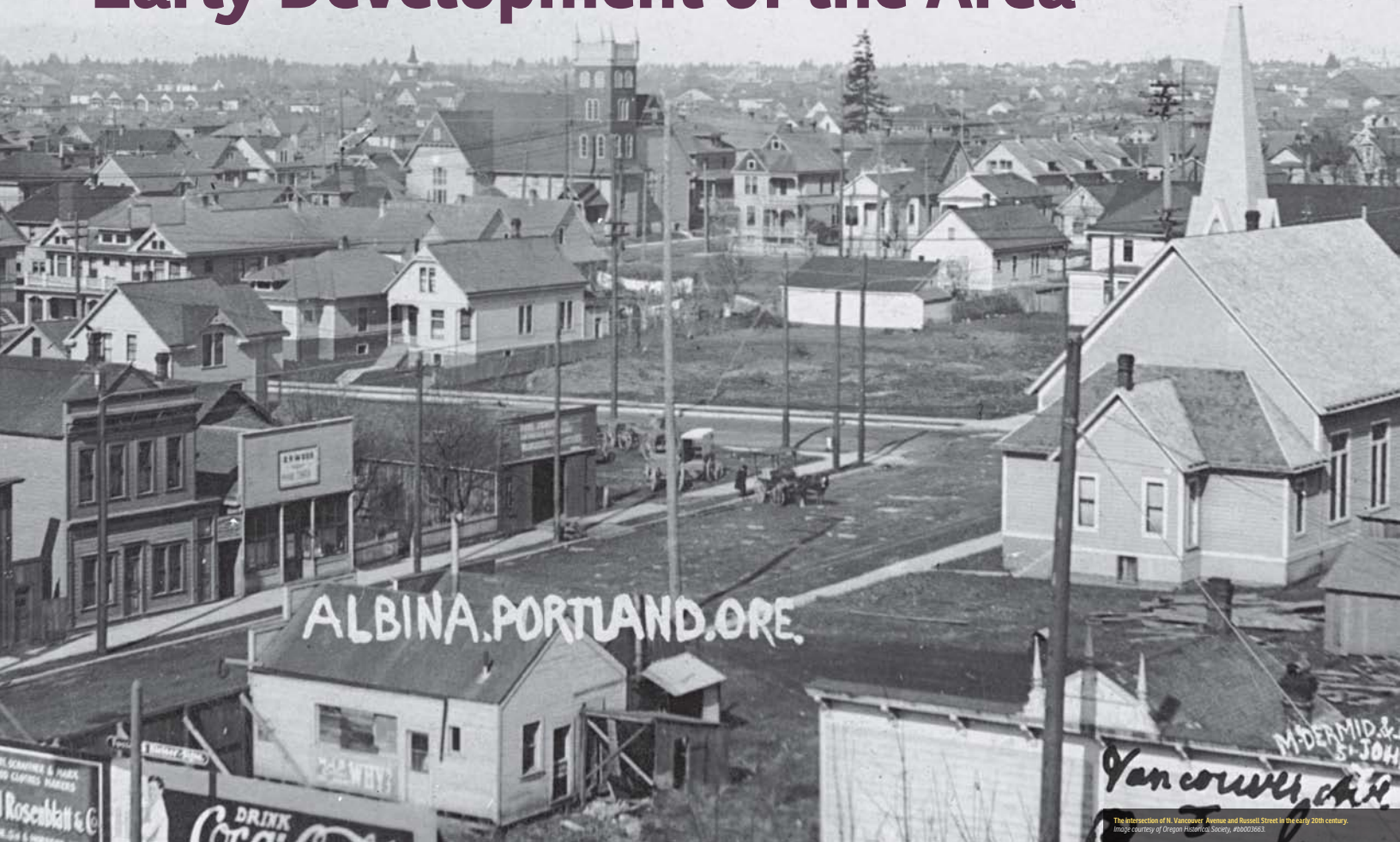


Albina, Eliot and Early Development of the Area



The intersection of N. Vancouver Avenue and Russell Street in the early 20th century. Image courtesy of Oregon Historical Society, #0003663.

This exhibit highlights the history of the Eliot Neighborhood within the Albina District of Portland. Particular focus is paid to the role of Legacy Emanuel Medical Center in changing the dynamic of the neighborhood during the 1960s and 1970s, through its controversial urban renewal campus expansion.

Defining Eliot

The city of Portland defines the boundaries of Eliot as the Willamette River to the west, N. and N.E. Fremont Street to the north, N.E. 7th Avenue to the east, and N. and N.E.

Broadway to the south. Eliot is one of several neighborhoods within the Albina District. The district itself is divided into lower, center and upper, with the Eliot Neighborhood situated in Central Albina.

The name Eliot was not adopted as the neighborhood's designation until 1968, with the formation of the Eliot Neighborhood Association. The Model Cities Program, first begun in 1967, led to the establishment of eight neighborhoods and corresponding neighborhood associations in Albina. Eliot was named after Eliot Elementary School. The names Eliot and Albina are used

interchangeably in this exhibit, prior to the late 1960s.

The City of Albina

Albina was a separate city, located on a donation land claim. Edwin Russell and George H. Williams purchased the land from William Winter Page in 1872. The men named the town Albina, originally pronounced "AL-BEEN-ah," after the wife and daughter of Page. Major streets in the Albina District now bear the names of the town's early developers Russell and Williams.

Albina experienced rapid growth in the

1880s, due to the introduction of railways to the area. In 1882 it became the western terminus for a line operated by the Oregon Railroad and Navigation Company. Albina was incorporated in 1887 with its original city plat boundaries similar to those of the Eliot Neighborhood. By the time Albina consolidated with the cities of Portland and East Portland in 1891, its physical area had expanded greatly and it covered more land than the other two cities combined.

Legacy Emanuel in Eliot

Legacy Emanuel Medical Center was established as Emanuel Hospital in 1912.

The Swedish Lutheran hospital was originally located in downtown Portland. Three years earlier, Rev. Carl J. Renhard purchased undeveloped lots in Albina, at the corner of N. Commercial Avenue and Stanton Street. At the time, the surrounding community included a heavy concentration of Scandinavian immigrants, with Swedes living primarily in homes between Graham and Morris Streets. With a new building constructed on the lots purchased by Renhard, Emanuel Hospital moved into the neighborhood in 1915 and continues to stand at the same location.



Albina railroad yards and machine shops in the early 20th century. Image courtesy of Oregon Historical Society, # 0005968.



Emanuel Hospital opened a new building in Eliot in 1915. Image courtesy of the Emanuel Hospital School of Nursing Archive.

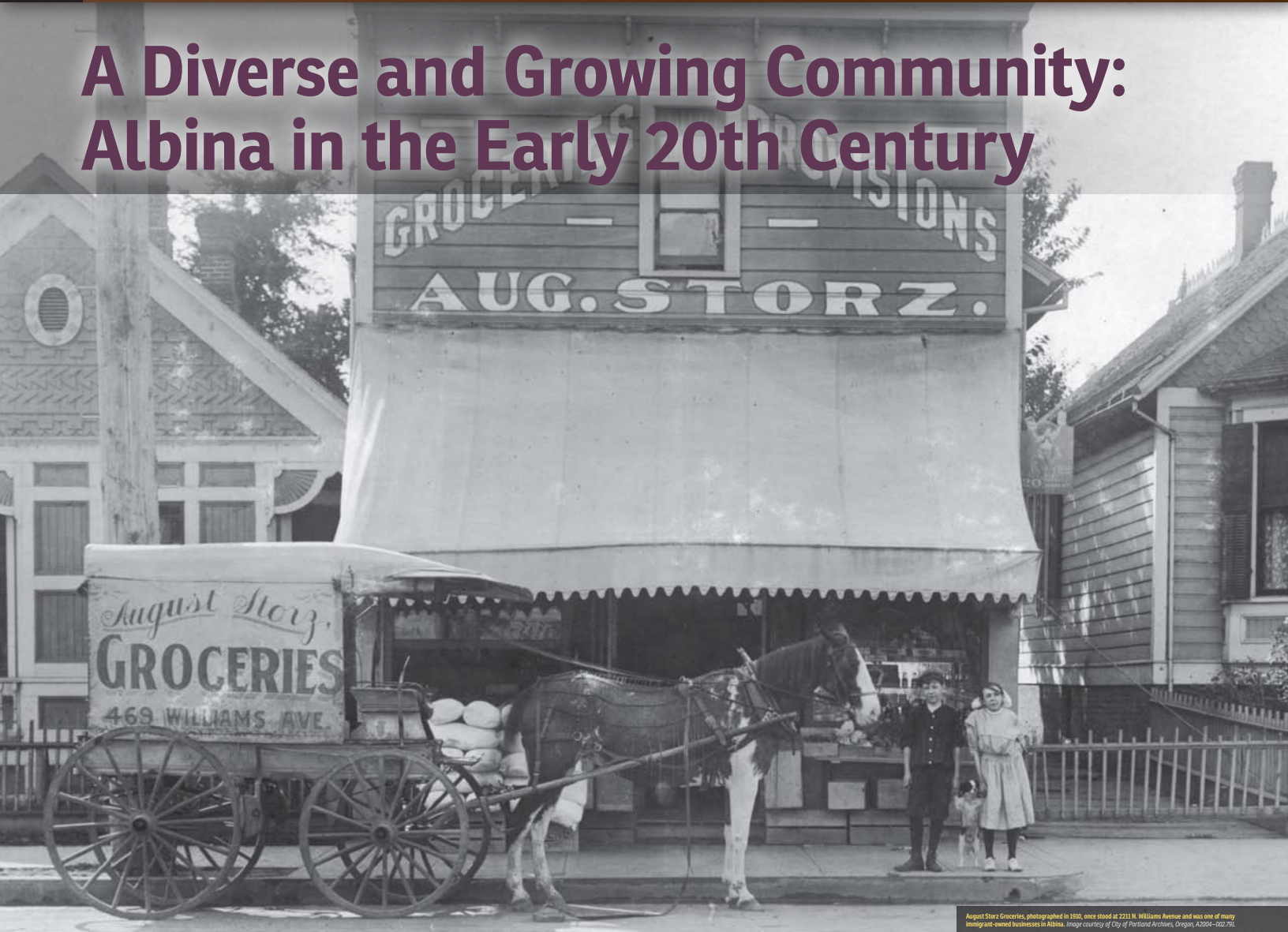


Eliot is one of several neighborhoods in the Albina District of Portland. Map courtesy of Karen J. Gibson, *Reading Albina: A History of Community Development, 1840-2000*, *Transforming Anthropology*, 15(1), 2007:3-25.



The Eliot Neighborhood took its name from Eliot Elementary School, which once stood on N.E. Knott Street. The school was named after Thomas Lewis Eliot, a minister and civic leader. Image courtesy of City of Portland Archives, Oregon, A2001-030.

A Diverse and Growing Community: Albina in the Early 20th Century



August Storz Groceries, photographed in 1910, once stood at 2211 N. Williams Avenue and was one of many immigrant-owned businesses in Albina. Image courtesy of City of Portland Archives, Oregon, A2004-002791.

The Albina District and Eliot Neighborhood grew quickly in the first decades of the 20th century. The area fostered the development of a diverse community and was home to many immigrants and minorities in Portland.

Albina as a Gateway

Between the 1880s and 1910s, an increasing number of immigrants settled in Albina, attracted by inexpensive housing and easy access to industrial and commercial jobs. Russians, Poles, Hungarians, Greeks

and Italians joined already-established communities in Albina from Germany, Ireland, Sweden and Norway. Albina served as a gateway for immigrants just arriving to Portland in the first half of the 20th century.

Migration of the Black Community

A second wave of migration began in the early 1900s. Portland's black community, once centered in Northwest Portland near Union Station, began moving eastward. Albina offered jobs in the railroad industry, then the predominant employer of black workers

in the city. Prior to the early 20th century, blacks could live throughout Portland, but as the black population increased rising racist attitudes and discriminatory practices made it difficult to purchase property or rent apartments in areas outside of Albina. In 1919, the Portland Realty Board adopted a policy restricting its members from selling property to blacks or Asians, claiming such sales would depreciate property values. The Realty Board officially abandoned its racial exclusion policy in 1952, but the practice continued. Such actions led to redlining practices that

geographically restricted the black community. Albina became increasingly known as a black neighborhood.

Williams Avenue: The Commercial Hub of the Neighborhood

As the population increased in Albina, so did businesses. The intersection of Williams Avenue and Russell Street became a commercial center of the area. By the 1930s, Albina was a thriving, working class community, with a growing black presence. Many black residents moved into homes and established

businesses, centered predominantly along Williams Avenue, particularly near the intersection with Broadway. The street also offered valued social and community centers, like the Williams Avenue YWCA. The building was and continues to be an important structure in the community, once used by the local branch of the NAACP, the USO during World War II and various social and political clubs.

By 1940, a significant portion of Portland's black population lived in Albina. That number increased during and after World War II.



The Egyptian Theater was a popular theater on Union Avenue, now Martin Luther King, Jr. Boulevard. It was heavily remodeled over the years and now houses the New Song Community Church. Image courtesy of Thomas Robinson.



Albina in 1905. Image courtesy of Oregon Historical Society, # 00009720.

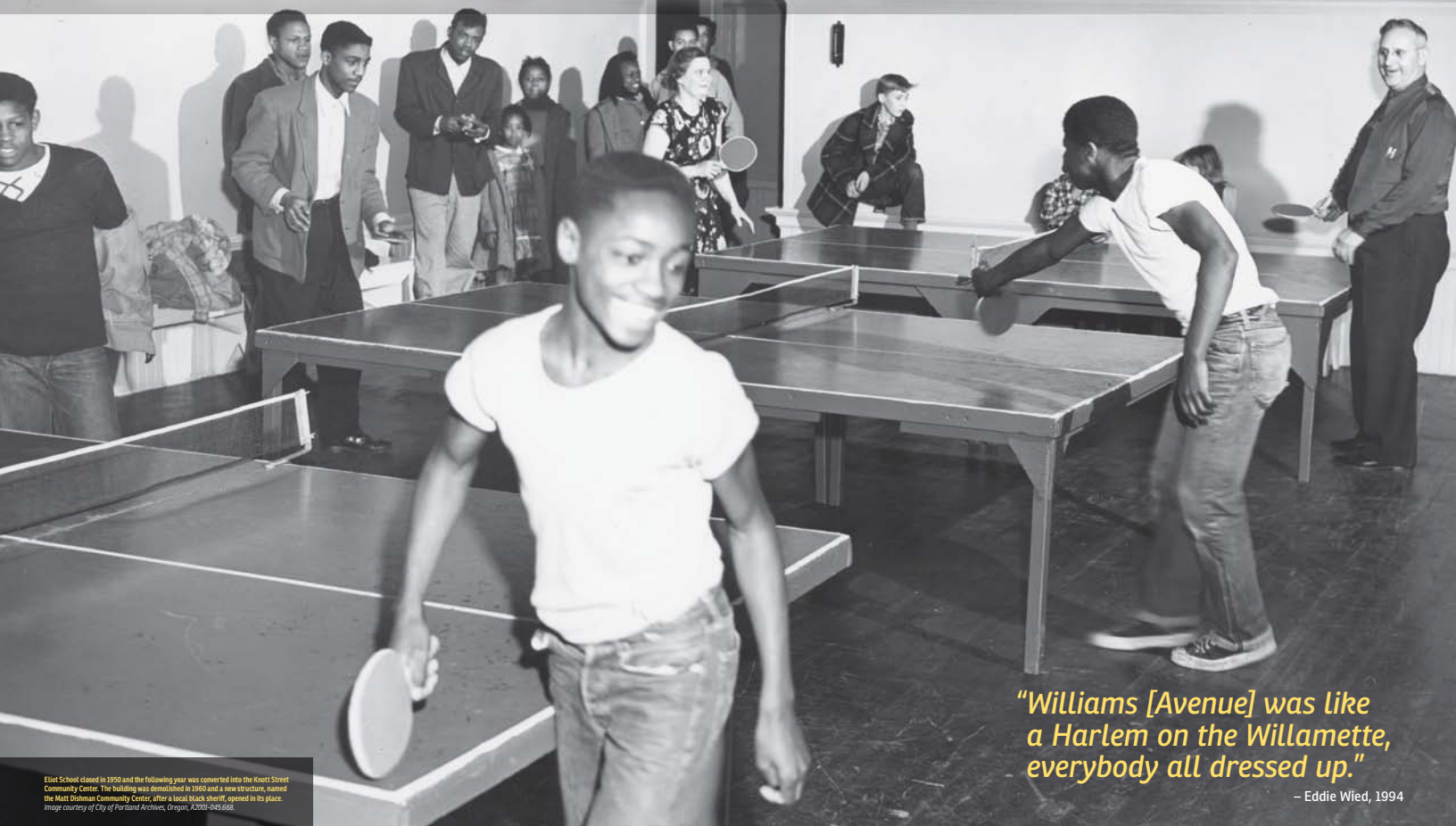


The Williams Avenue YWCA was constructed in 1920. It served many community functions over the years, including as a center for Vancouver flood refugees. It is now known as the Billy Webb Black Lodge. Image courtesy of Oregon Historical Society, # 00007276.

ACKNOWLEDGING THE PAST, EMBRACING THE FUTURE

A Glimpse into The History of Albina's Eliot Neighborhood

Eliot in the Postwar Era



"Williams [Avenue] was like a Harlem on the Willamette, everybody all dressed up."

— Eddie Wied, 1994

Eliot School closed in 1950 and the following year was converted into the Knott Street Community Center. The building was demolished in 1960 and a new structure, named the Matt Dishman Community Center, after a local black sheriff, opened in its place. Image courtesy of City of Portland Archives, Oregon, A2001-045.668.

World War II saw an explosion in Portland's population. Recruited to work in the shipbuilding industry, approximately 15,000 blacks, many from the South, moved to the area. An estimated 3,000 new black residents settled in Eliot, but were segregated from other neighborhoods in the Albina District.

The population influx resulted in a significant housing shortage. Wartime housing projects, like Vanport and Guild's Lake, were constructed to alleviate the problem. Vanport became the largest public housing project in the country and by 1945 its population reached nearly 40,000. Following the end of the war,

the housing shortage continued and many residents remained in the temporary wartime housing projects.

The Vanport Flood

On May 30, 1948, the Columbia River broke through a dike and flooded the city of Vanport. Thousands were left homeless. The Vanport flood intensified the existing housing shortage and many blacks were forced to resettle in the already crowded Albina area. The Portland Realty Board continued its discriminatory practices of decades past, further encouraging black settlement in North and Northeast Portland.

Civil Rights

Founded in 1945, and currently headquartered in the Eliot Neighborhood, the Urban League of Portland, along with the local NAACP branch, fought housing and employment discrimination facing Portland's black residents. The Albina Ministerial Alliance formed in 1958 to fund programs that encouraged community, education and economic development. Community leaders like Otto Rutherford, Dr. DeNorval Unthank and Rev. O. B. Williams fought for civil rights for Portland's black community, which by 1957 was heavily concentrated in the Albina District.

Albina and the Black Community

The black community in Albina continued to grow during the 1940s and 1950s and the area experienced white flight in the postwar years. By 1950, Albina was an economically challenged section of Portland, but one supporting a vibrant community. Many black families resided in Eliot, along with older white residents.

Blacks were routinely denied mortgages and financing to improve their properties, which further encouraged the deterioration of housing stock in Albina, with many homes more than fifty years old. Many blacks in the postwar era found little employment outside

of service industries and thus some of the city's lowest income households were located in Albina.

Land values in Central Albina and Eliot soared in the mid-20th century, as planners and developers targeted the area for light industrial and commercial activities. Immense changes occurred in the Albina District in the next few decades, as vast amounts of housing were razed and cleared away to make way for urban renewal projects.



The Hill Block Building, photographed in the 1950s, once stood at the heart of Albina's commercial district at the intersection of N. Williams Avenue and Russell Street. Built in 1892, it was named for Charles H. Hill, Albina's first mayor. Image courtesy of Oregon Historical Society, # 80059732.



Vanport residents fled the flood on May 30, 1948. Many residents resettled in the Albina District. The Vanport site is now occupied by West Delta Park, Portland International Raceway and Heron Lakes Golf Course. Image courtesy of Oregon Historical Society, # 80059802.



Williams Avenue, photographed in 1968. Image courtesy of Thomas Robinson.



Neighborhood children photographed at N. Vancouver Avenue and Stanton Street in 1961. Image courtesy of Thomas Robinson.

The Rise of Urban Renewal and the Loss of Community in Albina

"Clearly, urban renewal, largely by clearance, appears to be the only solution to, not only blight that presently exists in Central Albina, but also to avoid the spread of that blight to other surrounding areas."

- Central Albina Study, 1962

A significant portion of the city's black community was lost during construction of Memorial Coliseum. This 1956 aerial shows residences and businesses that once stood at the current site of the Coliseum and Rose Quarter. Image courtesy of Thomas Robinson.

In the 1950s and 1960s, Portland's city leaders, planners and developers embraced nationally accepted planning principles and began labeling inner-city communities, like Albina, as so-called "blighted areas," neighborhoods beyond salvage and thus targeted for clearance.

Urban Renewal: A National Trend

The United States Congress passed the Housing Act of 1949, which sought the elimination of substandard housing and "blight" in an effort to improve national welfare. Urban renewal, as supported by such federal legislation, was said to redevelop and

rehabilitate deteriorating areas, but in Albina it led to the demolition and displacement of many communities.

Memorial Coliseum and the Beginning of Urban Renewal Projects in Albina

Planners thought Albina, offering highly valued inner city land, would better serve such projects as light industry, highway development and institutional expansion. In 1956, Portland citizens voted to construct a sports center. The Memorial Coliseum project led to the demolition of 476 housing units at the southern end of Portland's black community and displaced hundreds of people, black

and white. More homes were also razed for the construction of the right-of-way for the Minnesota Freeway, also known as Interstate 5, in 1964.

The Portland Development Commission (PDC) was established in 1958 to perform functions related to urban renewal, including redevelopment, property acquisition and land clearance. In 1962, the PDC published the Central Albina Study, an examination of an urban renewal program for an area bounded by Fremont Street, Union Avenue (now MLK), Broadway and Interstate Avenue. In its report, PDC found the neighborhood to be in advanced stages of blight, beyond rehabilitation and

recommended urban renewal, largely through clearance of properties, as the only solution.

The Albina Neighborhood Improvement Project and the Exclusion of Eliot

A year earlier, PDC had launched the Albina Neighborhood Improvement Project (ANIP), the first urban renewal project in Northeast Portland targeting neighborhood rehabilitation, rather than redevelopment. The program addressed residences in the area bounded by Fremont Street, Skidmore Street, Vancouver Avenue and Mississippi Avenue, and thus excluded the Eliot Neighborhood. Many Albina residents considered ANIP to be a

success and in 1967, more than 1,000 citizens petitioned City Council to extend the project south of Fremont. The request was denied as PDC had written off future residential potential in the area south of Fremont and west of Union Avenue because the area was already targeted for Emanuel Hospital's urban renewal efforts.

More than any other neighborhood in Albina, Eliot suffered the effects of urban renewal. Through the aforementioned projects, as well as the Emanuel Hospital Urban Renewal Project, Eliot lost half of its residents between 1960 and 1970, approximately 3,000 people.



The Memorial Coliseum, photographed in 1969. Image courtesy of City of Portland Archives, Oregon, A2012-005.



Maxey's Barber Shop once stood at 28 N. Wollast Street, but was demolished during construction of Memorial Coliseum. Owner Charles Maxey, a community leader and activist, reopened his business in 1969, at a location outside of the black neighborhood. Image courtesy of Oregon Historical Society, # 8009802.



Construction of the Minnesota Freeway led to the demolition of many homes in Eliot, as seen in this 1962 photograph. The parking lot of Memorial Coliseum can be seen to the left. Image courtesy of City of Portland Archives, Oregon, A2005-00180.

The Origins and Planning of the Emanuel Hospital Urban Renewal Plan

"There is little doubt that the greatest concentration of Portland's urban blight can be found in the Albina area encompassing the Emanuel Hospital... Conditions will not improve without a concerted effort by urban renewal action."

- Portland Development Commission, 1966

PROPOSED DEVELOPMENT FOR EMANUEL HOSPITAL

Emanuel Hospital Administrator Paul Hanson with the proposed development plans for a new medical campus, first announced to the public in late February 1967. Image courtesy of Thomas Robinson.

Administrators at Emanuel Hospital announced to the public on February 28, 1967, plans to develop a modern medical campus. The hospital cited a need for expansion, and the subsequent land clearance in the Eliot Neighborhood, lest it be forced to relocate to a suburban location. This was the first time the public learned of the Emanuel Hospital Urban Renewal Project, though the hospital, Portland Development Commission (PDC) and others had been working on a hospital expansion plan for several years.

Urban Renewal Program Possibilities

Beginning in May 1960, representatives from the City of Portland, urban renewal

consultants and Emanuel Hospital administrator Paul Hanson discussed establishing an urban renewal zone in Central Albina. By July 1962, Emanuel notified the city about its interest in preparing a campus expansion development plan, utilizing the urban renewal program. Hospital administrators met with the Department of Housing and Urban Development (HUD) to discuss the possibility of such a plan. PDC directed its staff to prepare a report regarding the feasibility of an urban renewal zone in the Central Albina area. Findings of the report concluded that the area was unfit for residential rehabilitation and recommended land clearance to make way for the urban renewal project.

Emanuel Acquires Properties in Eliot

Soon after PDC passed a resolution to study the feasibility of forming an urban renewal district in the area, Emanuel Hospital began a seven-year property acquisition program. Emanuel privately purchased and demolished 101 properties, which ultimately served as the local matching funds for federal urban renewal funding. None of these property owners received relocation benefits.

The Hamilton Report

Emanuel Hospital hired James A. Hamilton & Associates, hospital consultants based in Minneapolis, Minnesota, to prepare a report detailing the future role of the hospital

and possible development. Completed on September 25, 1964, the Hamilton Report identified the needs for the hospital's expansion in the surrounding community and quantified the amount of land needed to accomplish such plans. These requirements, as outlined in the report, were used by PDC to define the land required for the Emanuel Hospital urban renewal zone. The figures were also cited in the Survey and Planning Grant Application, later submitted to HUD.

Development for the Emanuel Hospital urban renewal zone included hospital and related facilities, offices, parking, employee housing and housing for low-income elderly residents. The proposed extended hospital

campus included a 55.3-acre area bounded by Interstate 5, N. Kerby Street, N. Russell Street and N. Williams Avenue.

The Emanuel Hospital Urban Renewal Plan moved forward in early 1967. On January 9, PDC approved the undertaking of surveys and plans related to the project and authorized the filing of the grant application to HUD. Ten days later, City Council formally approved the urban renewal project.



The neighborhood immediately surrounding the hospital in 1960. Image courtesy of Emanuel Hospital School of Nursing Archive.



Emanuel Hospital began acquiring and clearing properties to make way for its expanded campus. The intersection of N. Stanton Street and Commercial Avenue, photographed in late 1960. Image courtesy of Thomas Robinson.



The hospital cleared land near the hospital in February 1961. Image courtesy of Thomas Robinson.



The map shows the 101 properties that were privately purchased by Emanuel Hospital between 1960-1969 and used as the local match for the urban renewal funding. Image courtesy of City of Portland Archive, Oregon, 76, #2200-001.

Implementing the Emanuel Hospital Urban Renewal Project



"A hospital has to grow. That's a fact. But, does it have to expand out or can it expand up?"

— Robert Grinsell, 2009

In the summer of 1970, churches in the Albina area sponsored a series of meetings to discuss the Model Cities programs, including the Emanuel expansion. Emanuel staff described how expansion would benefit the community as well as the entire city. Many residents were previously unaware that the hospital had been acquiring and clearing properties for years. Image courtesy of Thomas Robinson.

Plans for the Emanuel Hospital Urban Renewal Project were well underway when the hospital formally announced its plan to the public. Coinciding with the announcement of the plan was Portland's receipt of federal funding through the Model Cities Program, an initiative created to improve implementation of existing urban programs by emphasizing comprehensive planning, rehabilitation and citizen participation. A 4.3 mile area in North and Northeast Portland was declared the Model Cities district. The Model Cities Program also led to the establishment of

several neighborhood associations, including Eliot, Boise, King, Humboldt, Irvington, Vernon, Woodlawn and Sabin.

Emanuel Hospital and the Model Cities Program

Between March and November 1967, Emanuel's Survey and Planning Grant application was amended to meet the new requirements under the Model Cities Program. Emanuel's Board of Directors adopted a resolution in 1968 to coordinate the hospital's urban renewal plan with Model Cities. The

Model Cities Citizens' Planning Board was organized in 1968 and became the main citizen review vehicle for the Emanuel project. The board expressed concerns that the PDC and the City had failed to provide adequate citizen review of the planning and implementation process. Through negotiations, PDC and Emanuel promised to keep citizens better informed and more involved, primarily in the form of a working relationship with the Model Cities Citizens' Planning Board.

The City Approves Emanuel Hospital Urban Renewal Plan

In May 1970, the Department of Housing and Urban Development approved Emanuel's Survey and Planning Grant application. The Model Cities Citizens' Planning Board, Portland Development Commission and the City Planning Commission then approved the Emanuel Hospital Urban Renewal Plan in July 1970. Despite a decade planning the urban renewal project, the first public hearing for residents and businesses affected by the urban renewal project was not held until July 29, 1970. This

was the first time many affected residents heard about the hospital's urban renewal plan or the project's relocation plan. City Council adopted the urban renewal plan at the meeting.

Eliot Citizens React

In response to the project, a citizens' group of residents organized to express concerns regarding the proposed relocation of residents, compensation offered for properties and lack of affordable housing for displaced citizens. They called themselves the Emanuel Displaced Persons Association.



A 1968 aerial of the neighborhood surrounding Emanuel Hospital. Some cleared land can be seen. Image courtesy of Thomas Robinson.



The Burnett family residence, 529 N. Monroe St., photographed in 1969. Image courtesy of City of Portland Archive, A2010-002.



The Eisner family residence, 2928 N. Commercial Ave., photographed in 1969. Image courtesy of City of Portland Archive, A2010-003.



1111 N. Russell St., photographed in 1969. Lee Ellis Bass and Stacy Conroy and his family rented apartments on the second floor. Lee Greis owned and operated Law's Man's Shop. Image courtesy of City of Portland Archive, A2010-003.

Community Opposition, Relocation and Building Demolition

"Didn't they have a long range plan? After all, if your life's investment was smashed to splinters by a bulldozer to make room for a hospital, you could at least feel decent and perhaps tolerable about; but to have it all done for nothing..."

— Mrs. Leo Warren, 1973



The home of Mrs. Bobbie Verhaegh, 253 N. Ivy St., photographed prior to demolition in 1972. Image courtesy of City of Portland Archive, A2010-003.



The home of Elizabeth Hepburn, 410-412 N. Winart St., photographed prior to demolition in 1972. Image courtesy of City of Portland Archive, A2010-003.



The home of Myra L. Frary, 2932 N. Commercial Ave., photographed prior to demolition in 1972. Image courtesy of City of Portland Archive, A2010-003.



The home of Alex and Bessie Eaton, 2740 N. Vancouver Ave., photographed in 1971 prior to demolition. Image courtesy of City of Portland Archive, A2010-003.



The home of Leonard Bell, 500 N. Knott St., photographed prior to demolition in 1973. Image courtesy of City of Portland Archive, A2010-003.



The Minieweather family residence, 3117 N. Commercial Ave., photographed prior to demolition in 1971. Image courtesy of City of Portland Archive, A2010-003.

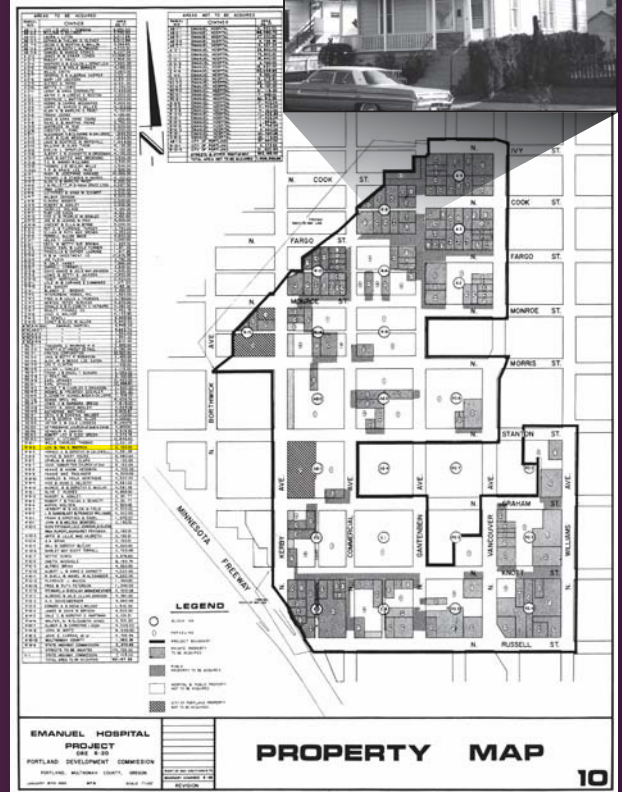


The commercial block 17-23 N. Russell St., photographed in 1972, was demolished. The building once housed Paul's Restaurant and Paul's Cook-Edo, owned by local businessman Paul Kowalski. Image courtesy of City of Portland Archive, A2010-003.



Kathie Harvey, Ernestine Hawkins and Edward Lawrence rented apartments at 217 N. Monroe St. It was photographed prior to demolition in 1972. Image courtesy of City of Portland Archive, A2010-003.

312 N. Cook St., photographed in 1969, was the home of Leo and Ina V. Warren, chairwoman for the Emanuel Displaced Persons Association. It was demolished during urban renewal. Image courtesy of City of Portland Archive, A2010-003.



1969 Emanuel Hospital Project Property Map shows homes and businesses, along with property owners' names, to be acquired as part of the urban renewal plan. Image courtesy of City of Portland Archive, A2010-003.

The Emanuel Displaced Persons Association (EDPA), led by Mrs. Leo Warren, became the main voice protesting the Emanuel Hospital Urban Renewal Project. EDPA went before City Council in October 1970, to express its concerns regarding the fairness of the project's relocation assistance plan. Developed in 1969, the relocation plan claimed ample alternative housing was available for displaced residents, thus there was no need to construct new housing. The group also objected to the manner in which the Portland Development Commission (PDC) communicated with affected residents and business owners about relocation.

Emanuel Displaced Persons Association Takes Action

Receiving no feedback from PDC or the City, EDPA submitted a legal brief to the Department of Housing and Urban Development (HUD) Area Director in November 1970. The brief challenged the relocation plan and EDPA charged PDC with using inaccurate housing data, failing to comply with Model Cities relocation requirements and inadequately coordinating displacement activities. As a result, HUD withheld approval of the relocation plan until an agreement could be made between EDPA and other parties.

The hospital project moved forward after EDPA, Emanuel Hospital, Housing Authority of Portland, PDC, Model Cities Citizens' Planning Board and City Demonstration Agency signed a Replacement Housing Agreement in March 1971. The agreement provided for the development of 180-300 housing units as replacements for demolished homes. Shortly after signing the agreement, Emanuel stated that it would provide land for the replacement housing, but would not be responsible for funding or developing it. None of the other agencies agreed to step forward. Subsequently, low-income housing, an original component of the project, was never provided.

Portland Development Commission Acquires and Demolishes Properties

PDC began acquiring properties in 1971. Federal laws required PDC to relocate all homeowners into comparable housing without financial loss to the homeowner. Approximately 74% of those relocated were black. Most moved into neighborhoods within a three-mile radius of their old homes. Renters were relocated, primarily to Northeast neighborhoods. Apartment buildings and commercial structures were also demolished to make way for the expanding medical campus. In total, twenty-two blocks in the Eliot Neighborhood were cleared.

Emanuel Campus Expansion Postponed Indefinitely

Emanuel Hospital Urban Renewal Project was intended as a multi-phase venture. The first two phases were completed by 1970 on property the hospital had owned or privately acquired in the previous decade. In 1973, the hospital announced the cancellation of the third phase, citing lack of federal funding due to the curtailment of the Hill-Burton Act. With the demolition of properties completed, displaced residents expressed anger at the hospital, PDC and the city, as cleared land would remain vacant for decades.



Demolition of properties within the Emanuel Hospital urban renewal project area, September 1972. Image courtesy of City of Portland Archive, A2010-003.



Fred Hampton Memorial People's Health Clinic, operated by the Portland chapter of the Black Panthers, stood at 36 N. Russell Street until its demolition in 1975. Image courtesy of City of Portland Archive, A2010-003.



The prominent Hill Block Building was razed in 1975. Its ornate steeple dome was salvaged and later installed atop a gazebo in Division Park, but the empty land continued to remind residents of the failed urban renewal project. Image courtesy of City of Portland Archive, A2010-003.



Following the demolition of the Hill Block Building, the lot at N. Williams Avenue and Russell Street continues to stand vacant, a reminder of the failed urban renewal project. Image courtesy of City of Portland Archive, A2010-003.

ACKNOWLEDGING THE PAST, EMBRACING THE FUTURE

A Glimpse into The History of Albina's Eliot Neighborhood

Those Affected by Relocation

"It was like one big family. But now everyone's pretty well scattered."

- Lucille Glass, 1973

Eliot resident affected by the Emanuel Hospital Urban Renewal Relocation Project, photographed in 1971. Image courtesy of City of Portland Archives, A2000-003

The following names are known individuals, families and businesses relocated by the Portland Development Commission as part of the Emanuel Hospital Urban Renewal Project between 1971 and 1973. The names were recorded as found in the Portland Development Commission Emanuel Relocation records at the City of Portland Archives.

| | | | | | | | | |
|--------------------------------------------------------------------------------------------------|-----------------------------------------------------------------------------------------------------------------------------------------------------------------------------|------------------------------------------------------------------------------------------------------------------------------------------------------------|----------------------------------------------------------------------------------------------------------------------------------------------------------------------------------|---------------------------------------------------------------------------------------------------------------------------------------------------------------------------------------------------------------------------------------------------------------------------------------|---------------------------------------------------------------------------------------------------------------------------------------------------------------------------------------------------------------------------------------------------------------------------|----------------------------------------------------------------------------------------------------------------------------------------------------------------------------------------------------------------------------------------------|---------------------------------------------------------------------------------------------------------------------------------------------------------------------------------------------------------------------------|----------------------------------------------------------------------------------------------------------------------------------------------------------------------------------------------------------------------------------------------------------------------------------------------------------------------------------------------------------------------------------------------------------------------------------------------------------------------------------------------------------------------------------------------------------------------------------------------------------------------------------------------------------------------------------------------------------------------------------------------------------------|
| Vera Able Emanuel-Husband | Dovle Bryson James Bonner-Son Hazel-Daughter-in-Law Charles Bonner-Son Pauline-Granddaughter Tracy-Granddaughter | Clarence Davenport Frank Demme Jewell Denison David Dent Wanda-Wife Angela-Daughter Doretha-Daughter | Theodore Frahs Kathryn-Wife Verna-Son Wormilia-Daughter Elizabeth-Mother | Cottrell Hoggans Cherry Alice Horsman Tracy Pamela-Daughter Theresa-Son Anthony-Son | Emilie J. Mercer Allen-Son Verna-Daughter Judy-Daughter Michael C. Nathan-Son | Inell Pendergraph Tracy-Daughter Cheryl N. Pennington Michael C. Nathan-Son | Fred Thompson Lous J.-Wife Henry L. Thompson Dorothy-Wife Hewey-Son Lisa-Daughter | William H. Woods Jr. Alice-Wife Rebekah-Son Andrea-Daughter |
| Alex Allen Annie-Daughter Donald-Son | Johnny Buffington Valeo-Wife Mrs. Mabel Burns Anna Coge Edward Caldwell Phillip-Son Horace Caldwell Dorothy-Wife Stanley-Son Janet Anne-Daughter | Carl DeWeese Laverne-Wife Carl Jr.-Son Philip-Son Kenneth-Son | Myra L. Frary Margaret Fytsman Albert L. Garnett Annie Elizabeth-Wife Daughter Lillian (Conley) Glass Cephas Glover Thelma D.-Wife Patsy Robinson-Mother | Lynn Hull Virgil Ingram Angela-Daughter Doretha-Daughter Lewis Jackson Betty R.-Wife Laura Elizabeth Jones Ollie Jones Mary-Wife Roosevelt Jones Claude E. Johnson Lucille Johnson Barker T. Thomas-Son Lee-Son Vilore-Daughter J.C.-Son | Stewart Minnieweather Beulah-Wife James Henry Mitchell Fred Petersen Ruth-Wife Lushie Powell Laverne Pruitt (Lockett) Anna Radet Betty Roberts Jake Robinson Betty P.-Wife Stacy Brockie-Grandson General S. Shipper Albernia-Wife | Ruth Peoples Mary E. Perkins Fred Petersen Ruth-Wife Lushie Powell Laverne Pruitt (Lockett) Anna Radet Betty Roberts Jake Robinson Betty P.-Wife Stacy Brockie-Grandson General S. Shipper Albernia-Wife | Lucy Skoko Aaron J. Smith Sarah L.-Wife No name provided-Son Karen-Daughter | William H. Woods Jr. Alice-Wife Rebekah-Son Andrea-Daughter |
| Robert J. Allen John S. Altmanns Mary Barber Andrew-Son Lloyd-Son Tara-Daughter | Johnnie-Daughter Lee Etta Bass Billy R. Bates William-Son Victoria-Son | Oscar Dial Jack L. Downing Lona-Wife Adella-Mother | Woodrow Godon Mary-Wife Rita-Daughter William Bissett-Son | Erma Elaine Naiten Cynthia-Daughter Michael-Son Rena Eliese Nichols Jackie-Daughter Mark-Son Claude E. Johnson Lee-Son Vilore-Daughter J.C.-Son | Richard Dennis Smith William Smith Ruth A. Hildebrand-Son Mary Stewart William D. Stitt Betty J.-Wife Michael-Son Troy-Son Jerry-Son Terry Lynn-Daughter William-Son | Leo Warren Cleo Washington Kathryn Washington Raymond D. Wesley Rosevelt Wesley Lucy Barnes-Mother Scott C. Whitcomb Carmen E. White Brian Harris-Son | Alton Williams Bonnie J.-Wife Beth-Son T.C. Williams Mandy-Wife Theo Williams Jamesetta E. Woods | Lee Trailer Company Howard R. Lee George Lee Rooming House Lynn Kirby Ford Body Shop Manning Bros. Garage Martin Manning McClure Apartments Frank Moore Oregon Rug & Mattress Co. Richard Walker Paul's Cocktails Lloyd Green C.R. Robbins Inn Henry Leht Demme Brothers Inc. John K. Allen Bocket Denson Rooming House Jewell Bessiah Field Sensi Threader Machine Co. Herbert Field Fred Hampton People's Health Clinic Ken Ford Gethsemane Church of God in Christ Good Samaritan Church of God Ingle Service Station Ronald Ingle Jewell At Star Dairy Irving Erickson Jewell Glass Company Seymour R. Danah Johnson Apartments Lew's Man's Shop Lew Glass |
| Leonard Bell Capitola-Wife | A.W. Catlin Etak-Wife Judy-Daughter | John Draw Carroll-Wife Alice Faye-Daughter Doris Ann-Daughter Virgil J.-Son Clayton-Son Janis M.-Daughter | Verla Granville Ruskin-Son Mary-Daughter Robert-Son James H. Groner Gwendolyn-Wife | Edward Lawrence Edward Patricia-Wife George Parashos Dorinda Parks Jeff-Son Darryl-Son Dorain-Daughter Beverly Parrish Carmen-Daughter Romaine-Daughter | Samuel Stokes Maggie B.-Wife Jerry A. Stuart Jr. Birdie Lee Taylor Rome-Son Theresa-Daughter Teresa-Daughter Paulette-Daughter Terry-Son Dorine-Daughter Diana Linda-Daughter Andrew-Son | Douglas White Evelyn-Wife Edward Haughton-Son Douglas Jr.-Son Louise White Alton Williams Bonnie J.-Wife Beth-Son T.C. Williams Mandy-Wife Theo Williams Jamesetta E. Woods | Thomas Shire Parlor & Bicycle Shop Charles Thomas Wallace Building Wreckers D.E. Wallace Walton Apartments Wills Watson Western Food Equipment Co. Robert Laughlin Wysinger Rental Cecil Brown | |
| Robert Lee Dignan Elnora Bookner | Hugh E. Clark L.C. Clark Bessie-Wife Gene Andy-Son Raymond-Son Hazel Edward-Son Leo C. Clinton Willie Mae-Mother | Chester Edwards Roscoe Ellis Ray-Wife Fannie Mae Faulkner Herbert M. Field Wife Stephen M. Fischman Irene-Wife Angela-Daughter | Kathi Harvey Alexandra-Daughter Ernestine Hawkins Jerry-Son Willie Jr.-Son James L. Hawkins Elizabeth Hepburn Michael David-Son Donald A.-Son | George Lee Robert Lee Ray McClister Verna Thompson-Mother Otis Johnson-Uncle Wanda-Wife Billy Jr.-Son Steve-Son | Birdie Lee Taylor Rome-Son Theresa-Daughter Teresa-Daughter Paulette-Daughter Terry-Son Dorine-Daughter Diana Linda-Daughter Andrew-Son | William D. Stitt Betty J.-Wife Michael-Son Troy-Son Jerry-Son Terry Lynn-Daughter William-Son | Alton Williams Bonnie J.-Wife Beth-Son T.C. Williams Mandy-Wife Theo Williams Jamesetta E. Woods | |
| Richard Brent Laudis-Wife Robert Jr.-Son Richard Lee-Son | Ray Edward-Son Hazel Edward-Son | Jesse Flores Gaalapue-Wife Gondalene-Daughter Jesse Jr.-Son John-Son Maggie-Daughter Annie-Daughter Ellen-Daughter | Walter Hines Elizabeth-Wife Edmond-Son Walter Jr.-Son Marlee-Grandson Gary Semmes-Grandson Sam Wiley-Uncle Laura Caberton-Aunt David Hines-Asteph | George Lee Robert Lee Ray McClister Verna Thompson-Mother Otis Johnson-Uncle Wanda-Wife Billy Jr.-Son Steve-Son | Samuel Stokes Maggie B.-Wife Jerry A. Stuart Jr. Birdie Lee Taylor Rome-Son Theresa-Daughter Teresa-Daughter Paulette-Daughter Terry-Son Dorine-Daughter Diana Linda-Daughter Andrew-Son | William D. Stitt Betty J.-Wife Michael-Son Troy-Son Jerry-Son Terry Lynn-Daughter William-Son | Alton Williams Bonnie J.-Wife Beth-Son T.C. Williams Mandy-Wife Theo Williams Jamesetta E. Woods | |
| Elijah Brown Jessie Mae Brown Rena-Daughter Lance-Son Marlyn-Daughter Fremont-Son | Fred Collins Arlie-Wife Lester Cook Lestha Mae Cooper Walter Corgy Fredericka Corley | Angela-Daughter Jesse Flores Gaalapue-Wife Gondalene-Daughter Jesse Jr.-Son John-Son Maggie-Daughter Annie-Daughter Ellen-Daughter | Walter Hines Elizabeth-Wife Edmond-Son Walter Jr.-Son Marlee-Grandson Gary Semmes-Grandson Sam Wiley-Uncle Laura Caberton-Aunt David Hines-Asteph | George Lee Robert Lee Ray McClister Verna Thompson-Mother Otis Johnson-Uncle Wanda-Wife Billy Jr.-Son Steve-Son | Samuel Stokes Maggie B.-Wife Jerry A. Stuart Jr. Birdie Lee Taylor Rome-Son Theresa-Daughter Teresa-Daughter Paulette-Daughter Terry-Son Dorine-Daughter Diana Linda-Daughter Andrew-Son | William D. Stitt Betty J.-Wife Michael-Son Troy-Son Jerry-Son Terry Lynn-Daughter William-Son | Alton Williams Bonnie J.-Wife Beth-Son T.C. Williams Mandy-Wife Theo Williams Jamesetta E. Woods | |
| Joe Brown Demetrias Browning Ukara Anderson-Daughter | Allyan Cornwall Rena-Wife Sean Corgy Rosa-Daughter Vida-Wife | Angela-Daughter Jesse Flores Gaalapue-Wife Gondalene-Daughter Jesse Jr.-Son John-Son Maggie-Daughter Annie-Daughter Ellen-Daughter | Walter Hines Elizabeth-Wife Edmond-Son Walter Jr.-Son Marlee-Grandson Gary Semmes-Grandson Sam Wiley-Uncle Laura Caberton-Aunt David Hines-Asteph | George Lee Robert Lee Ray McClister Verna Thompson-Mother Otis Johnson-Uncle Wanda-Wife Billy Jr.-Son Steve-Son | Samuel Stokes Maggie B.-Wife Jerry A. Stuart Jr. Birdie Lee Taylor Rome-Son Theresa-Daughter Teresa-Daughter Paulette-Daughter Terry-Son Dorine-Daughter Diana Linda-Daughter Andrew-Son | William D. Stitt Betty J.-Wife Michael-Son Troy-Son Jerry-Son Terry Lynn-Daughter William-Son | Alton Williams Bonnie J.-Wife Beth-Son T.C. Williams Mandy-Wife Theo Williams Jamesetta E. Woods | |
| Louis Browning Hattie Mae-Wife Lynn Edward-Son Lloyd Edward-Son | Robert Louis Browning Gene-Son James-Son | Angela-Daughter Jesse Flores Gaalapue-Wife Gondalene-Daughter Jesse Jr.-Son John-Son Maggie-Daughter Annie-Daughter Ellen-Daughter | Walter Hines Elizabeth-Wife Edmond-Son Walter Jr.-Son Marlee-Grandson Gary Semmes-Grandson Sam Wiley-Uncle Laura Caberton-Aunt David Hines-Asteph | George Lee Robert Lee Ray McClister Verna Thompson-Mother Otis Johnson-Uncle Wanda-Wife Billy Jr.-Son Steve-Son | Samuel Stokes Maggie B.-Wife Jerry A. Stuart Jr. Birdie Lee Taylor Rome-Son Theresa-Daughter Teresa-Daughter Paulette-Daughter Terry-Son Dorine-Daughter Diana Linda-Daughter Andrew-Son | William D. Stitt Betty J.-Wife Michael-Son Troy-Son Jerry-Son Terry Lynn-Daughter William-Son | Alton Williams Bonnie J.-Wife Beth-Son T.C. Williams Mandy-Wife Theo Williams Jamesetta E. Woods | |



The home of T.C. Williams, 203 N. Fargy St., photographed in 1971 prior to demolition. Image courtesy of City of Portland Archives, A2000-003.



T.C. Williams was relocated to 235 N. Holland St., 2.5 miles from his former residence, by the Portland Development Commission. Image courtesy of City of Portland Archives, A2000-003.

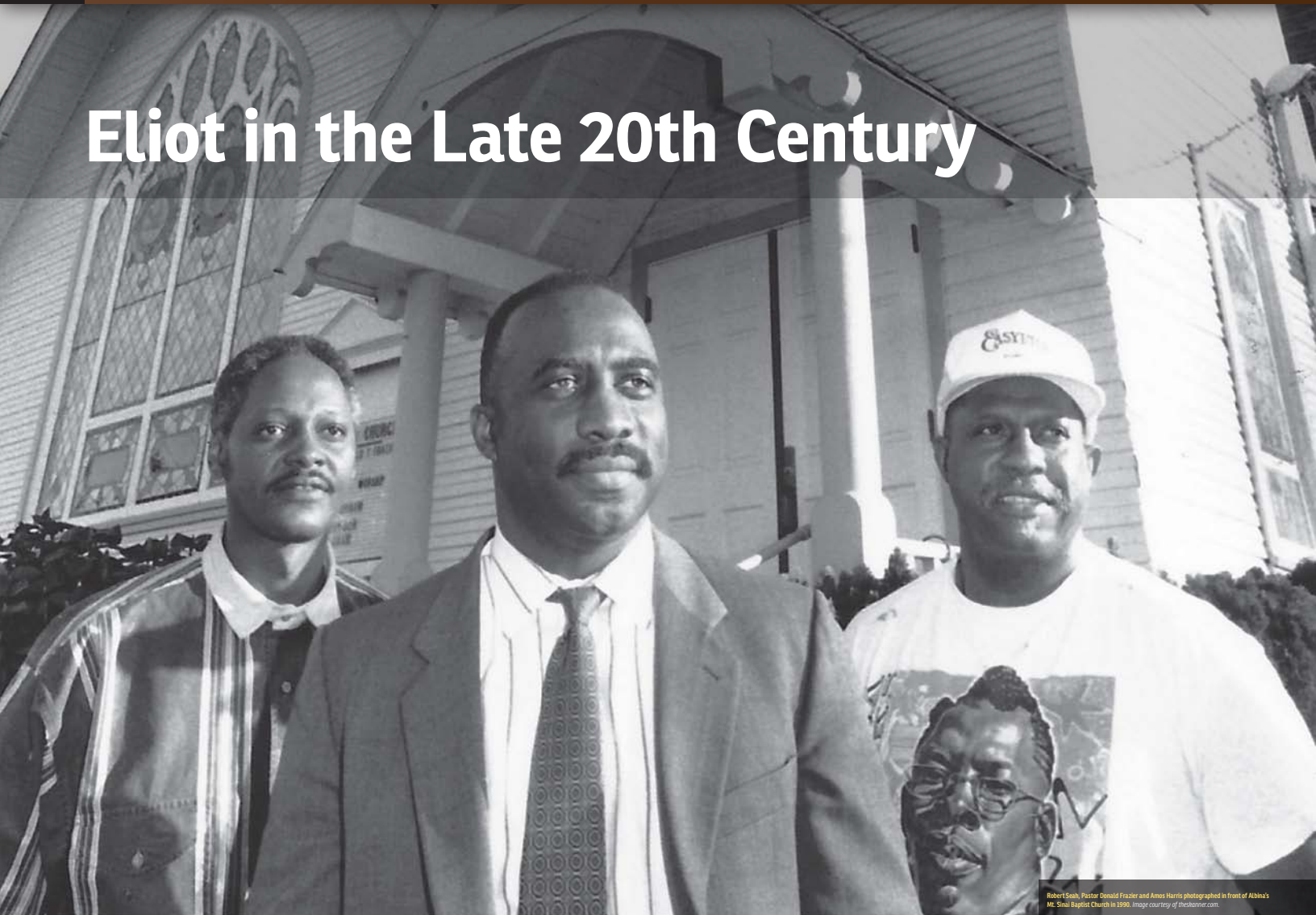


The home of Jake and Bettie Robinson, 122 N. Graham St., photographed in 1971 prior to demolition. Image courtesy of City of Portland Archives, A2000-003.



Jake and Bettie Robinson were relocated to 6025 N.E. 19th Ave., 27 miles from their former residence. Image courtesy of City of Portland Archives, A2000-003.

Eliot in the Late 20th Century



Robert Sesh, Pastor Donald Frazier and Amos Harris photographed in front of Albina's Mt. Sinai Baptist Church in 1990. Image courtesy of thesharmer.com.

The Eliot Neighborhood was dramatically altered by urban renewal projects during the 1960s and 1970s, losing more than half of its residential buildings during this period. The construction of the Fremont Bridge resulted in the loss of additional housing. Zoning issues continued to arise, as city planners pushed for rezoning of surviving residential areas into light industrial.

Eliot Neighborhood Association

The Eliot Neighborhood Association (ENA), formed in the late 1960s, worked to stabilize and preserve surviving homes in the community. The advocacy of the association

coupled with a shift in urban planning philosophy by the late 1970s worked toward redeveloping residential and commercial properties rather than clearing so called "blighted" areas in inner-city neighborhoods like Eliot. In 1978, the Housing Authority of Portland redeveloped vacant land on N. Williams Avenue into Unthank Plaza, an 80-unit low-income housing project, named in honor of the late DeNorval Unthank, M.D., a black physician and civil rights activist.

Pressures on the Community

The neighborhood experienced serious problems during the 1980s and suffered a decline in population, as crime increased

throughout the Albina District. Abandoned housing, absentee landlords, drug dealing, prostitution and gang warfare became common threats to the community. The Black United Front, Portland Organizing Project and other neighborhood activists fought to improve conditions in Albina and stem the growth of crime.

By the 1990s, Eliot was home to a growing number of white and Hispanic residents, in addition to the remaining black members of the community. The city began efforts to revitalize Albina and in 1993 it adopted the Albina Community Plan, an ambitious community planning effort that focused on land use, housing needs and transportation

but also the education, employment and economic development needs of the community. The Albina Community Plan aided in the establishment of conservation districts in Eliot and along Russell Street, as part of efforts to preserve what remained of the neighborhood's historic structures. While significant improvements occurred in the neighborhood, issues like gentrification and rising property costs continued to plague Eliot.

Eliot Neighborhood Plan

The Eliot Neighborhood Plan was part of the larger Albina Community Plan and originated with the Eliot Neighborhood Vision Statement, developed by the ENA and Emanuel

Hospital between 1988 and 1990. The plan recognized the hospital as a significant member of the neighborhood, one that provided medical care and employment opportunities to Eliot residents, but also recommended a growth boundary for the medical campus to prevent further encroachment on surviving residential and commercial buildings. The plan also included a provision making it as difficult as possible to change residential zones to commercial or industrial zones, a lesson learned from the earlier urban renewal era.



Eliot Gospel Fest. Image courtesy of thesharmer.com.



The Black United Front, led by Ron Herridon and Rev. John Jackson, advocated for racial justice, education, economic development and jobs. Image courtesy of thesharmer.com.



Rev. John Jackson was an Albina activist and co-chairman of the Black United Front. He arrived in Portland in 1964, serving as pastor of Mt. Olivet Baptist Church until his retirement in 1987. Image courtesy of thesharmer.com.

"We fought like mad people to keep the crime out of here. Had we not fought, I don't know what this area would've eventually been. But the newcomers haven't given us credit for it."

- Charles Ford, 1990

Legacy Emanuel Medical Center and the Community



Albina Cooperative Garden. Image courtesy of Legacy Emanuel Medical Center.

Legacy Emanuel Medical Center has been a member of the Eliot Neighborhood since 1915. Though the Emanuel Hospital Urban Renewal Project caused significant losses in the community through resident relocation and building demolition, the hospital has long been a strong community supporter, and is currently engaged in reconciliation efforts to acknowledge and honor those affected by the urban renewal experience of the 1960s and 1970s.

To stimulate stability and economic growth in the surrounding community, and improve relationships with the neighborhood, Legacy Emanuel launched the Emanuel Neighborhood Home Ownership Program (ENHOP) in 1994. Participating employees received forgivable

loans to assist in purchasing homes within a four-mile radius of the hospital. By the time the program ended a decade later, more than 100 employees had purchased homes through ENHOP.

A Part of the Neighborhood

The Legacy Emanuel campus is a vital part of the Eliot Neighborhood. In addition to medical care, the campus provides free meeting and office space. Organizations like the African American Health Coalition and Oregon Lutheran Synod have long maintained offices at Legacy Emanuel. The Eliot Neighborhood Association hosts its monthly meetings on the campus. When a fire destroyed the Morning Star Missionary Baptist

Church in 2007, Legacy Emanuel provided the congregation with complimentary office space. Legacy's Community Health Fund, established in 1998, further assists community organizations by funding health initiatives in the Portland-Vancouver area.

Revitalizing Dawson Park

In 2001, hospital representatives, community members and local businesses collaborated in efforts to take back Dawson Park. The Dawson Park Revitalization Project resulted in the transformation of the park from a center of criminal activity to a family friendly area, offering health fairs, the Concert in the Park series and church picnics.

The grounds of Legacy Emanuel also

benefit the Eliot Neighborhood. The hospital's healing gardens are open to the public. In 2012, a vacant lot, leftover from urban renewal, was repurposed into the Albina Cooperative Garden – a partnership with Legacy Emanuel, Project Grow at Port City, Eliot Neighborhood Association and Lloyd District Community Association.

Community Outreach

Legacy Emanuel has long provided outreach to the community through educational and injury-prevention efforts. One such offering is Legacy Trauma Nurses Talk Tough (TNTT), a nationally renowned injury prevention program aimed at reducing risky behavior among youth. Legacy Emanuel

has implemented other programs and services related to injury prevention, including burn prevention classes, CPR tutorials and home safety assessment courses. In 1999, Legacy Health established the Youth Employment in Summer (YES) program, an employment and college scholarship program for Hispanic, African American and Native American high school students. Legacy Emanuel also offers job shadowing and internship opportunities for students from local schools, including Jefferson High School and Benson Polytechnic High School.



Members of the Albina Ministerial Alliance (AMA) toured the hospital in 1971, along with Rev. William F. Ady, Director of Chaplaincy and Clinical Pastoral Education. That same year, Emanuel worked with AMA to publish educational materials regarding career opportunities at the hospital and distribute them to local churches and schools. Image courtesy of Thomas Robinson.



Legacy Health hosted a Healthy Kids Fair in 2010 at Dawson Park. Image courtesy of Legacy Emanuel Medical Center.



Legacy Emanuel marched in the 2012 Good in the Hood parade and celebrated the hospital's centennial anniversary. Image courtesy of Legacy Emanuel Medical Center.



Legacy Emanuel provided free health education and screenings for members of Open Bible Community Church during its annual Grandparents Day celebration in 2012. Image courtesy of Legacy Emanuel Medical Center.